



MULTITALENT SOFTWARE AT YOUR FINGERTIPS

Intuitive, Powerful, Appealing & Clean





falcon. solution.

MULTITALENT SOFTWARE AT YOUR FINGERTIPS

Introducing - The Falcon - The new standard in easy SMD equipment operation software.



one software - all tasks.

- Real time visualization
- Structured graphical user interface
- Setup and optimize jobs easily

user-friendly.

- Optimized for large touch screen
- Intuitive fingertip operation
- State of the art MMI and GUI

realtime information.

- Live camera stream, zoom and drag
- Universal CAD input, graphical conversion
- Live KPI (Key Performance Indicator)

online help and support.

- Powerful online help tool
- Dedicated remote service support
- Designed with the operator in mind

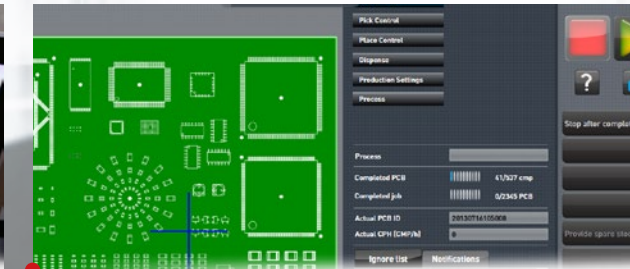
latest technology.

- Proven Windows 10 operating system
- High speed operation with 64-bit computer
- Easy to adapt with standard windows computer

www.essemtec.com



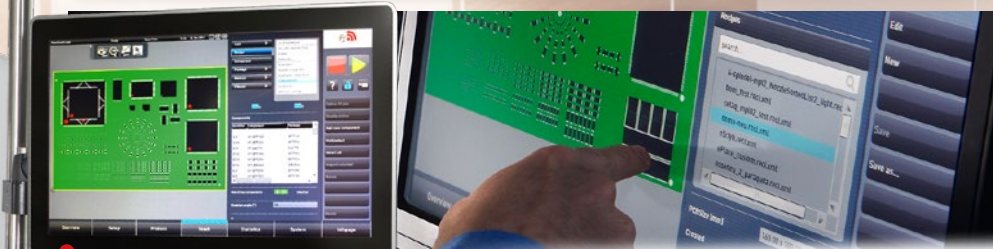
Falcon is the marketing name of the Essemtec's state of the art ePlace software based on the "eez-technology" architecture. ePlace is specifically designed for touch screen based operation (SEMI standards). The clearly structured layout is identical on all screens and contains a large graphical section, combined with a parameter and soft key area. All elements are optimized for the use of 21" wide touch screens.



Eez-Technology allows easy and intuitive control of highly complex processes used in high-mix SMD production environments. It combines state-of-the-art .net software technology and an integrated database with a clear and structured graphical user interface. This interface visualizes in real time actual production runs and gives clear information about the current status.

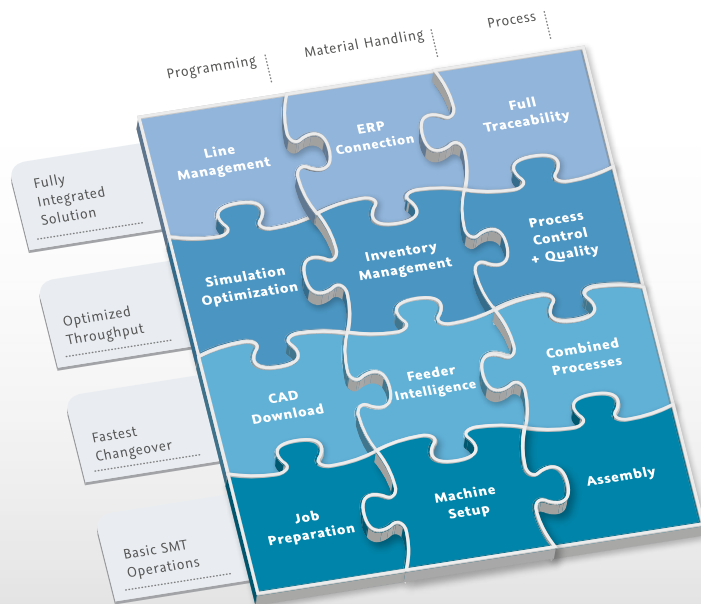


The new eMIS Management Software Suite for SMT production includes functions for job planning, feeder setup optimization, stock management, traceability, operational data analysis, line management and much more. With eMIS, managers and operators can keep track of actual, future and past production. Flexible interfaces simplify integration into your existing ERP and MES environment.



ePlace is based on job management with archiving system from which other functions are build up, such as job planning module, setup optimization routine, setup list generator, component storage management and more. A barcode reader is used for feeder setup and replenishment, which is the quickest and safest way to assign a component to a feeder.

ePlace can be further extended with additional software modules for offline programming, CAD transfer, online live KPI, production optimization and simulation, traceability data down to board level, automatic calibration, user level management and other add-ons for enhanced, daily operation.



SMART SOLUTIONS

Electronics assembly is about more than placement speed! A wide range of additional factors can help you get - and stay - ahead of your competition while manufacturing in the smartest, most cost efficient way. Let Essemtec set the standard for your state-of-the-art SMT assembly with one of the most flexible and smartest software packages to support all required processes - Falcon.

essemtec.
naturally adaptive



FLEXIBLE SMT SOLUTIONS

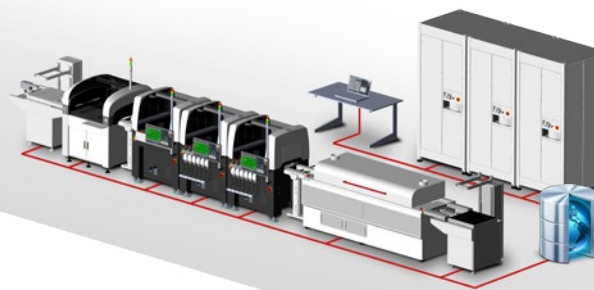
Essemtec AG

Mosenstrasse 20
CH-6287 Aesch/LU
Switzerland

Phone: +41 (0)41 919 60 60

Fax: +41 (0)41 919 60 50

Mail: info@essemtec.com



Wildlife consistently shows us with breathtaking flexibility how nature can adapt itself to the many different demands of its environment; that is what inspires us! Essemtec AG is a privately owned company with its development and production site in Switzerland. The product portfolio comprises of production equipment for electronic assembly and more. Our high tech solutions can be adjusted quickly and easily to meet wide ranging requirements; we are therefore able to respond to all manner of customer requests. That's why "naturally adaptive" is our motto across all ranges.

Disclaimer & Copyright:

The information contained in this brochure is for general information purposes only. For more information see the specification sheet. All materials contained in this brochure are copyright © Essemtec AG, Switzerland, May 2017

www.essemtec.com