



SMART-SIZED HIGH SPEED DISPENSER

Versatile, Accurate, Artistic & Reliable



naturally adaptive.



spider.

SMART-SIZED HIGH SPEED DISPENSER

Introducing - The Spider - PCB design freedom. State-of-the-art technology, easily integrated in any line.



CELL SOLUTION

LINE SOLUTION

Integration in any line

dispense technology.

- Up to 2 valves simultaneously
- 5 different valves, large application range

productivity.

- Valve up to 720'000 - System Ø 180'000 dots/h
- Up to 2'000'000 dot/h line mode

small footprint.

- Requires only 1 m² of production floor
- Machine fits through 90 cm wide door

mineral cast.

- No vibration, symmetrical mineral casting
- No warpage, no thermal drift

laser height mapping.

- Mapping of heights using laser technology
- Compensation of substrate warp / 3D contour

linear motors.

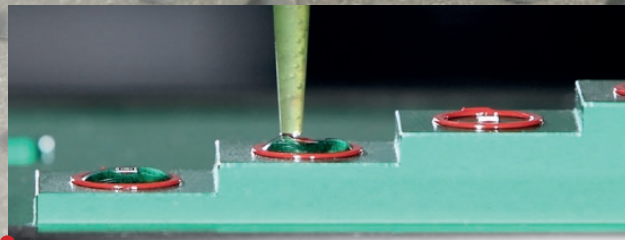
- Fast, reliable double drive linear motors
- No maintenance, longest lifetime

naturally adaptive.

INTEGRATE INTO HIGH SPEED LINES AND HIGHLY COMPLEX DISPENSE APPLICATIONS



Versatile range of dispensing applications such as Solder Paste and SMT Glue, LED Encapsulation, Silver Epoxy, Dam and Fill, Underfill, Cavity Fill, 2.5D Dispensing via laser height mapping & more



Full operator support - Automated error analysis & KPI. Training, support and troubleshooting via advanced remote access. Investment protection; all options and heads retrofittable.



Two processes at the same time. Plug and Play for valve change. Piezo Jet Valve - super high speed for low viscosity. Dynamic Shockwave, Volume Displacement, Time/Pressure, Archimedean Screw Valve



MULTITALENT SOFTWARE AT YOUR FINGERTIPS State of the art, full graphics, 21.5" 16:9 touch screen, Windows - 64 bit, fingertip operation, real time visualization zoom at camera windows, all-in-one job planning, universal CAD conversion, setup optimization, easy definition of pattern and guided process support

optional.

Valves & Pumps

Media Heating

Level Detection

Process Control

Integrated Inspection 2D defect detection for dispensed material

Vacuum Cleaning Station, High Precision Scale, Clean Room, Heating/Vacuum Table
Full process control meeting automotive standards and more



Needle and jet heating system



Automatic syringe level detection



Process control adjustment & stabilization





Inline with Fox Pick-and-Place



naturally adaptive.

essemtec.
A NANODIMENSION DIVISION

spider.

Process	Max. dispensing speed	Piezo Jet: > 720'000 dots/h Solder Paste Jet: 720'000 dots/h	Time/Pressure: 28'000 dots/h Archimedean Screw: 24'000 dots/h
	Dispensing mode	Dot, line, curve, interpolated 3D contour	
Accuracy	Placement XY dots	40 µm (3σ)	
	Positioning Z axis	20 µm (3σ)	
PCB	PCB dimensions	50 x 50 mm up to 406 x 305 mm (2 x 2" up to 16 x 12")	
Dimensions	Machine footprint	880 x 1090 mm (34.7 x 43")	



OUR FOCUS - YOUR SOLUTION SMART SMT EQUIPMENT

Wildlife consistently shows us with breathtaking flexibility how nature can adapt itself to the many different demands of its environment; that is what inspires us! Essemtec AG is a company with its development and production site in Switzerland. The product portfolio comprises of production equipment for electronic assembly and more. Our high-tech solutions can be adjusted quickly and easily to meet wide ranging requirements; we are therefore able to respond to all manner of customer requests. That's why "naturally adaptive" is our motto across all ranges.

Disclaimer & Copyright:

Information in this brochure is for general information purpose only. Further details are provided in the specification sheet. All materials contained in this brochure are copyright © Essemtec AG, Switzerland, January 2024

Switzerland Essemtec AG

Mosenstrasse 20
CH-6287 Aesch/LU
Tel: +41 41 919 60 60
essemtec.info@nano-di.com

Germany Essemtec GmbH

Taunusstrasse 21
DE-80807 Munich
Tel: +49 893 803 55 15
essemtec.info@nano-di.com

France Essemtec SAS

50, Avenue d'Alsace
FR-68000 Colmar
Tel: +33 640 658 406
essemtec.info@nano-di.com

America Essemtec USA LLC

300 5th Ave, Suite 1010
Waltham, MA 02451
Tel: +1 856 218 11 31
essemtec.sales-usa@nano-di.com



essemtec.com