



SMART SMD MATERIAL MANAGEMENT SOLUTIONS

Flexible, Intelligent & Expandable

naturally adaptive.



hive.

SMART SMD MATERIAL MANAGEMENT SOLUTIONS

Introducing - Hive - Fully integrated end-to-end storage solutions. Full traceability down to individual components.



**INTEGRATION MADE EASY
& FULL CONNECTIVITY**



expandability.

- One system, countless applications
- Expandable with various third party systems

productivity.

- Reduces logistic problems by 95%
- SMD reels of all sizes, trays, boxes & more

accuracy

- Full traceability of all stored items
- Software control for MSD components

roi. return on investment

- Best-in-class ROI of any production system
- Configure – Operate – Integrate!

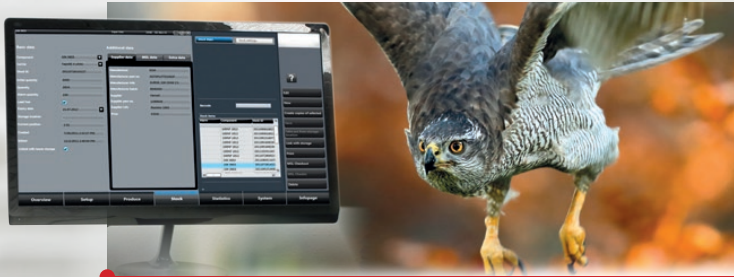
flexibility.

- Scalable up to fully automated storage cabinets
- Unique intuitive eStorage software

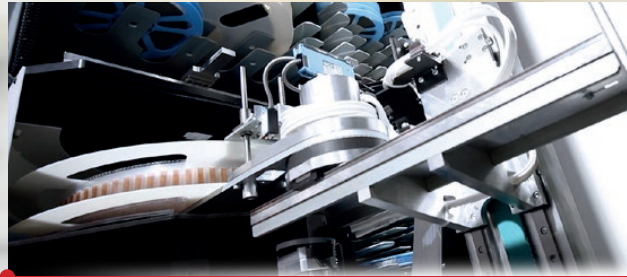
integration.

- Complete interface to many production and the most important ERP and material systems

naturally adaptive.



The heart of Essemtec's Smart Material Management Solution - eStorage - has a user-friendly HMI that guarantees a fast learning curve and ensures optimal usage. It is just a few clicks to all standard operations including full traceability of consumed material and correct inventory status at all times. MSD control is also part of the system scope. eStorage guarantees that the right material is in the right place at the right time.



Hive is a fully integrated SMD warehouse management solution, suitable for small to medium sized manufacturing as well as high to ultra high speed lines. According to studies, over 60% of all machine downtimes are due to logistical problems, i.e. the right material is not in the right place at the right time. Hive reduces this downtime by 95%. The ROI of a Hive solution is typically less than one year.



Hive, the next-generation warehouse management solution, helps users to expand system capacities at any time to suit individual and growing needs. Hive provides interfaces to our own and third party storage systems, as well as connections to ERP systems and forms the basis for a fully integrated material flow. From incoming goods, to the main warehouse, setup station, Essemtec production machines, to the finished product.



Centralized Data Management



Warehouse Management

Production Planning



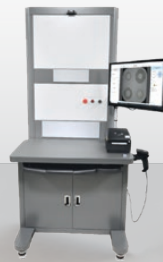
Machine Control



ERP Systems



Incoming Material



Component Counter



Feeder Cart, Barcode Rack



Humidity & Temperature Controlled



Intelligent Mobile



Intelligent Stationary



Fully Automated



naturally adaptive 4.0



galileo. incoming station

Complete goods receiving solution.

Fully automatic recognition of all relevant label information.

Barcodes, 2D codes, OCR.

Interface to ERP systems (optional).



archimede. rack -/cart

Smart pick-to-light storage racks with a capacity of 720 or 960 (extended) 7" reels.

SMD reels of all sizes (7"-15"), trays, boxes, bulk, sticks.

Rack or mobile cart versions.

Mobile, battery powered, WiFi (optional).



automated storage.

Fully automatic storage cabinets for SMD reels of all sizes, trays, boxes, bulk, sticks, etc.

Adaptable with any third party storage system.



**OUR FOCUS - YOUR SOLUTION
SMART SMT EQUIPMENT**

Wildlife consistently shows us with breathtaking flexibility how nature can adapt itself to the many different demands of its environment; that is what inspires us! Essemtec AG is a company with its development and production site in Switzerland. The product portfolio comprises of production equipment for electronic assembly and more. Our high-tech solutions can be adjusted quickly and easily to meet wide ranging requirements; we are therefore able to respond to all manner of customer requests. That's why "naturally adaptive" is our motto across all ranges.

Disclaimer & Copyright:

Information in this brochure is for general information purpose only. Further details are provided in the specification sheet. All materials contained in this brochure are copyright © Essemtec AG, Switzerland, January 2024

Switzerland Essemtec AG

Mosenstrasse 20
CH-6287 Aesch/LU
Tel: +41 41 919 60 60
essemtec.info@nano-di.com

Germany Essemtec GmbH

Taunusstrasse 21
DE-80807 Munich
Tel: +49 893 803 55 15
essemtec.info@nano-di.com

France Essemtec SAS

50, Avenue d'Alsace
FR-68000 Colmar
Tel: +33 640 658 406
essemtec.info@nano-di.com

America Essemtec USA LLC

300 5th Ave
Waltham, MA 02451
Tel: +1 856 218 11 31
essemtec.sales-usa@nano-di.com

