



SMART-SIZED MODULAR PICK-AND-PLACE

Compact, Clever, Simple & Agile



naturally adaptive.



fox.

SMART-SIZED MODULAR PICK-AND-PLACE

Introducing - The Fox Technology - for all types of components and devices. Expandable in any direction.



CELL SOLUTION

combined process.

- Placing & dispensing in single pass-through
- Jet dispensing of solder paste, glue & more

productivity.

- Up to 7'000 – 18'800 cph per module
- Valve up to 720'000 - System Ø 180'000 dots/h

small footprint.

- Up to 200 feeder lanes on 1 m² + trays
- Up to 420 feeder lanes per line (3 modules)

mineral cast.

- No vibration, symmetrical mineral casting
- No warpage, no thermal drift

quick changeover.

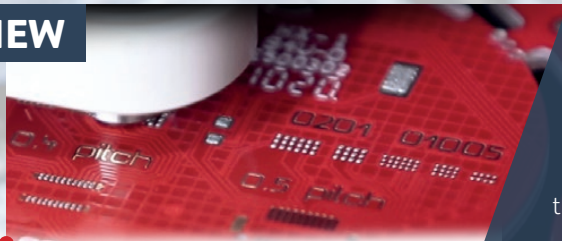
- Nonstop production, intelligent smart feeder
- Nonstop feeder and production changeover

linear motors.

- Fast, reliable double drive linear motors
- No maintenance, longest lifetime

naturally adaptive.

NEW



solder paste jetting

Adaptable for different jettable pastes. Optional integrated inspection. Adaptable for special applications (nozzle, tappet, temperature etc.). Optional needles for deep cavities.

A WORLD OF BENEFITS FROM NPI TO HIGH FLEX, HIGH SPEED PRODUCTION



Configurable heads with 1-4 placement-axis. 2.5D and 3D dispensing and jetting. High resolution digital vision system with auto component teach-in and irregular ball recognition.



Full operator support - Automated error analysis & KPI. Training, support and troubleshooting via advanced remote access. Investment protection; all options and heads retrofittable.



Multi flexible feeder, multi lane cassette or highly accurate single lane feeder. Tape, Stick, Strip, Tray slider. Largest component spectrum; 008004 up to 80 x 80 mm, component height up to 25 mm.



MULTITALENT SOFTWARE AT YOUR FINGERTIPS State of the art, full graphics, 21.5" 16:9 touch screen, Windows – 64 bit, fingertip operation, universal CAD conversion, zoom at camera windows, all-in-one job planning, setup optimisation, stock management, ERP/MES connection, data analysis, line management, traceability down to single component and more

optional

Integrated Inspection 2D defect detection for dispensing & pick and place

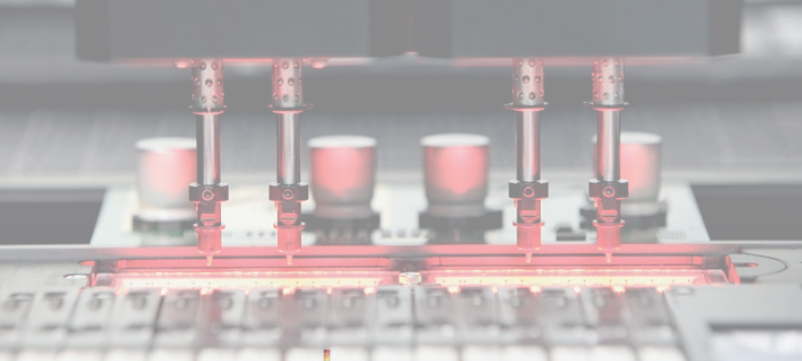
Laser Height Measurement Compensation of PCB warpage

Dispensing and Jetting Vacuum cleaning station for nozzles and tips

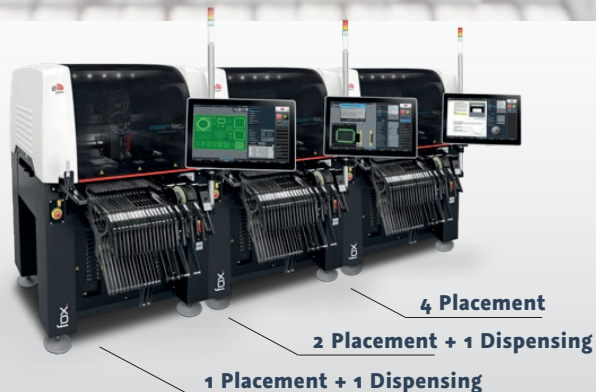
Tray Slider Unique system to increase the amount of trays

Increase Boardsize Table extension to increase the processable board size

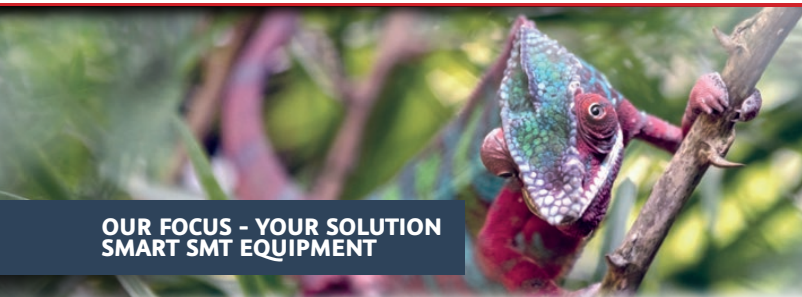
Additional: Electrical component test system, vision box to increase component size to be placed, clean room cover and more



naturally adaptive.



		fox.	fox. ²	fox. ⁴
Productivity	Optimum placement speed	7'000 cph (1-axis)	12'000 cph (2-axes)	18'800 cph (4-axes)
	Optimum jetting speed	Valve 720'000 - System Ø 180'000 dots/h		-
Feeder	Feeder capacity 8 mm tape	180 (120 inline)	180 (120 inline)	200 (140 inline)
Components	Component size range	008004 (imp.) up to 80 x 80 mm (Note specs for details)		
Accuracy	Placement accuracy (x, y)	Chip ± 40 µm (3σ) / QFP ± 30 µm (3σ)		
PCB	Max. PCB dimensions	406 x 305 mm (16 x 12")		
Dimensions	Machine footprint	880 x 1090 mm (34.7 x 43")		



**OUR FOCUS - YOUR SOLUTION
SMART SMT EQUIPMENT**

Wildlife consistently shows us with breathtaking flexibility how nature can adapt itself to the many different demands of its environment; that is what inspires us! Essemtec AG is a company with its development and production site in Switzerland. The product portfolio comprises of production equipment for electronic assembly and more. Our high-tech solutions can be adjusted quickly and easily to meet wide ranging requirements; we are therefore able to respond to all manner of customer requests. That's why "naturally adaptive" is our motto across all ranges.

Disclaimer & Copyright:

Information in this brochure is for general information purpose only. Further details are provided in the specification sheet. All materials contained in this brochure are copyright © Essemtec AG, Switzerland, January 2024.

Switzerland Essemtec AG

Mosenstrasse 20
CH-6287 Aesch/LU
Tel: +41 41 919 60 60
essemtec.info@nano-di.com

Germany Essemtec GmbH

Taunusstrasse 21
DE-80807 Munich
Tel: +49 893 803 55 15
essemtec.info@nano-di.com

France Essemtec SAS

50, Avenue d'Alsace
FR-68000 Colmar
Tel: +33 640 658 406
essemtec.info@nano-di.com

America Essemtec USA LLC

300 5th Ave, Suite 1010
Waltham, MA 02451
Tel: +1 856 218 11 31
essemtec.sales-usa@nano-di.com

