



## **FLEXIBLE COMPONENT FEEDING CONCEPT**

Accurate, Smart, Versatile & Agile

naturally adaptive.



# FLEXIBLE COMPONENT FEEDING CONCEPT

Introducing - the operator time-saver - for all types of devices. Full traceability down to single component.



## MAX 280 LANES

PLUS TRAYS AND MAXIMUM BOARD SIZE  
ON A SINGLE PUMA MACHINE

### space saving.

- Up to 200 feeder lanes on 1 m<sup>2</sup> / 280 on 2 m<sup>2</sup>
- Best in its class feedercount per square meter

### productivity.

- 008004 up to 80 x 80 mm, height up to 25 mm
- Hot swap, production optimization algorithms

### accuracy.

- Quadro loop 01005 component picking
- On-the-fly feeder change without teaching

### intelligence.

- Traceability & advanced material management
- Software concept for true non stop production

### all shapes any size.

- Dual Lane 4 mm / 8 mm Evo Feeder
- Single Lane Feeder 12, 16, 24, 32, 44, 56, 72 mm
- Deep Pocket Feeder (Height up to 25 mm)
- Cassette-/ Tape Strip-/ Stick Feeder
- Fixed Tray/ Tray Slider/ Tray Changer
- Label-/ Barcode Feeder
- Customized Feeder such as:  
THT-/LED Feeder, Vibratory Bowl etc.

naturally adaptive.





### single lane dual lane tape

Evo & hyQ - fastest on-the-fly feeder changeover. 01005 - highest index speed and accuracy in this machine class. Intuitive handling. Complete range.



### 40mm multi lane cassette

Designed for easy and fast setup. Economical, intelligent operation of up to 10 lanes tape per cassette. 0201 components - 72 mm tape width.



### stick tape strip cut-off

Tape cut-offs in prototyping and NPI production. Those feeder accommodate all types of tapes and widths and can be kitted directly on the machine.



### fixed trays tray changer tray slider

Unique tray setup solutions. Changer for up to 18 JEDEC trays. Slider without losing feeder space or board size. Freely programmable positions.



### customized

Integration & development of customized feeding solutions, such as Barcode Label, Vibratory Bowl, Dipping Station, THT, LED's and extra tall devices.



### compatibility

Multi flexible component feeding concept - Chaotic feeder placement. Speed optimization algorithms. Status LED for easy changeover concept definition.



### changeover times

Modular concept to gain optimum performance in availability of components without setup changes. Optimize product changeover time down to zero.



### highest flexibility

Quadro loop of components. Standard nozzles for all common SMT components, but also for LED's, bare dies, switches and a multitude of specialities.



### operator support

Full operator support - barcode set up, automatic recognition via camera system. Component teach-in via self learning software & more.





new potential for your pick and place setup



**Max 280 feeder  
(160 inline)**



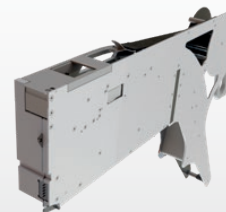
**Max 200 feeder  
(140 inline)**



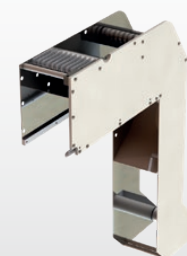
**Feeder Cart  
(168 feeder)**



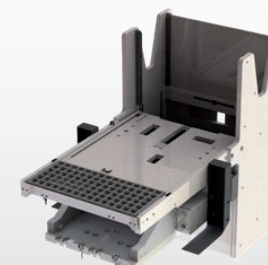
**Evo Feeder**



**hyQ Feeder**



**CLM Cassette**



**Tray Changer**



## OUR FOCUS - YOUR SOLUTION SMART SMT EQUIPMENT

Wildlife consistently shows us with breathtaking flexibility how nature can adapt itself to the many different demands of its environment; that is what inspires us! Essemtec AG is a company with its development and production site in Switzerland. The product portfolio comprises of production equipment for electronic assembly and more. Our high-tech solutions can be adjusted quickly and easily to meet wide ranging requirements; we are therefore able to respond to all manner of customer requests. That's why "naturally adaptive" is our motto across all ranges.

### Disclaimer & Copyright:

Information in this brochure is for general information purpose only. Further details are provided in the specification sheet. All materials contained in this brochure are copyright © Essemtec AG, Switzerland, January 2024.

### Switzerland Essemtec AG

Mosenstrasse 20  
CH-6287 Aesch/LU  
Tel: +41 41 919 60 60  
[essemtec.info@nano-di.com](mailto:essemtec.info@nano-di.com)

### Germany Essemtec GmbH

Taunusstrasse 21  
DE-80807 Munich  
Tel: +49 893 803 55 15  
[essemtec.info@nano-di.com](mailto:essemtec.info@nano-di.com)

### France Essemtec SAS

50, Avenue d'Alsace  
FR-68000 Colmar  
Tel: +33 640 658 406  
[essemtec.info@nano-di.com](mailto:essemtec.info@nano-di.com)

### America Essemtec USA LLC

300 5th Ave, Suite 1010  
Waltham, MA 02451  
Tel: +1 856 218 11 31  
[essemtec.sales-usa@nano-di.com](mailto:essemtec.sales-usa@nano-di.com)

